



| | |
|------------|-------------------------|
| ITEM: | ORIGINAL DRAWING NUMBER |
| 999-99-999 | EE-999-99-999-99-99 |

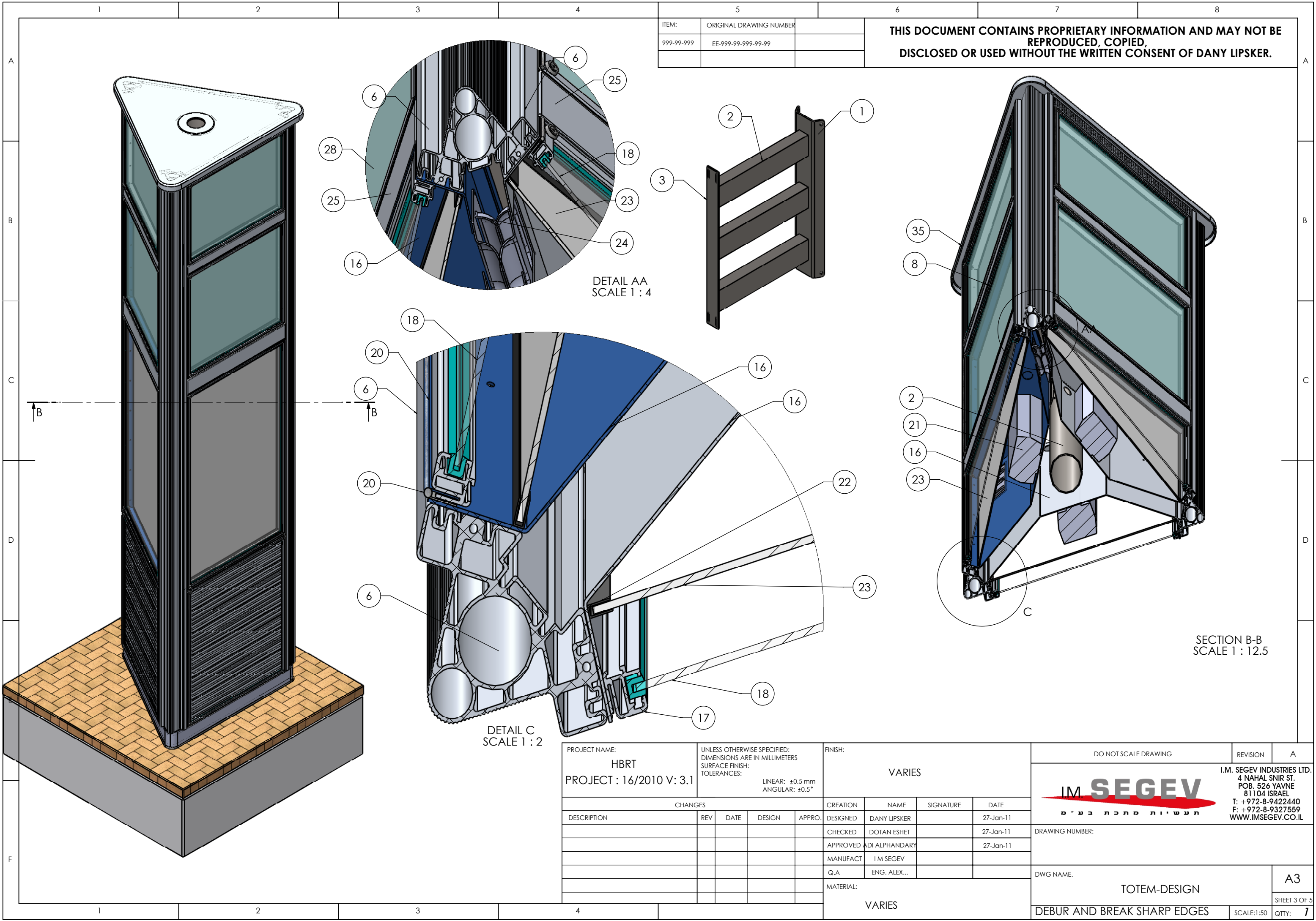
THIS DOCUMENT CONTAINS PROPRIETARY INFORMATION AND MAY NOT BE REPRODUCED, COPIED, DISCLOSED OR USED WITHOUT THE WRITTEN CONSENT OF DANY LIPSKER.

| | | | | | | | | | |
|---|-----|--|--------|-------------------|----------|--|--|--------------|---|
| PROJECT NAME: HBRT PROJECT : 16/2010 V: 3.1 | | UNLESS OTHERWISE SPECIFIED: DIMENSIONS ARE IN MILLIMETERS SURFACE FINISH: TOLERANCES: LINEAR: ± 0.5 mm ANGULAR: $\pm 0.5^\circ$ | | FINISH: VARIES | | DO NOT SCALE DRAWING | | REVISION | A |
| CHANGES | | CREATION | NAME | SIGNATURE | DATE |  I.M. SEGEV INDUSTRIES LTD. 4 NAHAL SNIR ST. POB. 526 YAVNE 81104 ISRAEL T: +972-8-9422440 F: +972-8-9327559 WWW.IMSEGEV.CO.IL | | | |
| DESCRIPTION | REV | DATE | DESIGN | APPRO. | DESIGNED | | | | |
| | | | | | CHECKED | | | | |
| | | | | | APPROVED | | | | |
| | | | | | MANUFACT | I M SEGEV | | | |
| | | | | | Q.A | ENG. ALEX... | | | |
| MATERIAL: | | VARIES | | DRAWING NUMBER: | | DWG NAME: | | A3 | |
| | | | | | | TOTEM-DESIGN | | SHEET 1 OF 5 | |
| | | | | | | DEBUR AND BREAK SHARP EDGES | | SCALE:1:50 | |
| | | | | | | | | QTTY: 7 | |

| | | | | | | | | | | | | | | | |
|---|----------|-----------------------------------|--|------------------------------|--|------|--|------------|--|-------------------------|--|--|--|---|--|
| 1 | | 2 | | 3 | | 4 | | 5 | | 6 | | 7 | | 8 | |
| A | ITEM NO. | PART NUMBER | | MATERIAL | | QTY. | | ITEM: | | ORIGINAL DRAWING NUMBER | | THIS DOCUMENT CONTAINS PROPRIETARY INFORMATION AND MAY NOT BE REPRODUCED, COPIED, DISCLOSED OR USED WITHOUT THE WRITTEN CONSENT OF DANY LIPSKER. | | | |
| | 1 | TOTEM-CONCRETE-FLOOR | | CONCRETE | | 1 | | 999-99-999 | | EE-999-99-999-99-99 | | | | | |
| | 2 | TOTEM-CONSTRUCTION-CORE | | AISI 304 | | 1 | | | | | | | | | |
| | 3 | TOTEM-CENTRAL-HEX-SUPPORT | | AISI 304 | | 2 | | | | | | | | | |
| | 4 | TOTEM-HOR-CONNECTION-PIPE | | AISI 304 | | 8 | | | | | | | | | |
| | 5 | TOTEM-PROFILE-VER-SUPPORT | | AISI 304 | | 2 | | | | | | | | | |
| | 6 | TOTEM-EXTRUDED-AL-CORNER-PROFILE | | AL-6061 | | 1 | | | | | | | | | |
| | 7 | TOTEM-GRID-PANNEL-BACK-SHEET | | AL5052 | | 1 | | | | | | | | | |
| | 8 | TOTEM-ALUM-PROFILE-1 | | | | 4 | | | | | | | | | |
| | 9 | TOTEM-GRILL-FRAME-ALUM-PROFILE-3 | | | | 1 | | | | | | | | | |
| B | 10 | TOTEM-GRID-DOOR-DECORATIVE-PANNEL | | AL-6061 | | 6 | | | | | | | | | |
| | 11 | TOTEM-PIANO-AXIS-3 | | Galvanized Steel | | 2 | | | | | | | | | |
| | 12 | TOTEM-MAP-REAR-PANNEL | | AL5052 | | 1 | | | | | | | | | |
| | 13 | TOTEM-GRILL-FRAME-RUBBER-GASKET | | | | 2 | | | | | | | | | |
| | 14 | TOTEM-RUBBER-GASKET-2 | | | | 8 | | | | | | | | | |
| | 15 | TOTEM-PIANO-AXIS-2 | | Galvanized Steel | | 2 | | | | | | | | | |
| | 16 | TOTEM-VESTMENT-1 | | AL5052 | | 1 | | | | | | | | | |
| | 17 | TOTEM-LOGO-BACK-PANNEL | | AL5052 | | 1 | | | | | | | | | |
| | 18 | TOTEM-MAP-FRAME-ALUM-PROFILE-3 | | | | 1 | | | | | | | | | |
| | 19 | TOTEM-MAP-FRAME-PERSPEX | | Acrylic (Medium-high impact) | | 1 | | | | | | | | | |
| C | 20 | TOTEM-PIANO-AXIS-1 | | Galvanized Steel | | 2 | | | | | | | | | |
| | 21 | TOTEM-VESTMENT-2 | | AL5052 | | 1 | | | | | | | | | |
| | 22 | TOTEM-ROOF-TOP-FLAT-ONLY | | AL5052 | | 1 | | | | | | | | | |
| | 23 | TOTEM-MAP-TIGHTER-FRAME | | PVC Rigid | | 1 | | | | | | | | | |
| | 24 | LATCH E3-56-55-CREO | | | | 8 | | | | | | | | | |
| | 25 | OLEVEON-2-128-54 | | | | 1 | | | | | | | | | |
| | 26 | LOUVERS-PLATE | | | | 6 | | | | | | | | | |
| | 27 | OLEVEON-2-114-24 | | | | 1 | | | | | | | | | |
| | 28 | TOTEM-REINFORCING SHEET | | | | 2 | | | | | | | | | |
| | 29 | TOTEM-EMPTY-BACK-PANNEL | | AL5052 | | 1 | | | | | | | | | |
| D | 30 | TOTEM-LOGO-FRAME-ALUM-PROFILE-3 | | | | 1 | | | | | | | | | |
| | 31 | TOTEM-LOGO-FRAME-PERSPEX | | Acrylic (Medium-high impact) | | 1 | | | | | | | | | |
| | 32 | TOTEM-LOGO-FRAME-RUBBER-GASKET | | | | 2 | | | | | | | | | |
| | 33 | TOTEM-PIANO-AXIS-1-EMPTY | | Galvanized Steel | | 2 | | | | | | | | | |
| | 34 | TOTEM-ACKERSTEIN-BLOCK-FLOOR | | CONCRETE | | 1 | | | | | | | | | |
| | 35 | TOTEM-ALUM-PROFILE-1 | | | | 4 | | | | | | | | | |
| | 36 | TOTEM-GRILL-FRAME-ALUM-PROFILE-3 | | | | 1 | | | | | | | | | |
| | 37 | TOTEM-GRILL-FRAME-PERSPEX | | Acrylic (Medium-high impact) | | 1 | | | | | | | | | |
| | 38 | TOTEM-MAP-FRAME-ALUM-PROFILE-3 | | | | 1 | | | | | | | | | |
| | 39 | TOTEM-MAP-FRAME-RUBBER-GASKET | | | | 2 | | | | | | | | | |
| E | 40 | TOTEM-MAP-WHITE-DIFFUSSER | | Acrylic (Medium-high impact) | | 1 | | | | | | | | | |
| | 41 | TOTEM-LOGO-FRAME-ALUM-PROFILE-3 | | | | 1 | | | | | | | | | |
| | 42 | TOTEM-LOGO-TIGHTER-FRAME | | PVC Rigid | | 1 | | | | | | | | | |
| | 43 | TOTEM-LOGO-WHITE-DIFFUSSER | | Acrylic (Medium-high impact) | | 1 | | | | | | | | | |
| | 44 | TOTEM-EMPTY-FRAME-ALUM-PROFILE-3 | | | | 1 | | | | | | | | | |
| | 45 | TOTEM-EMPTY-FRAME-ALUM-PROFILE-3 | | | | 1 | | | | | | | | | |
| | 46 | TOTEM-EMPTY-FRAME-PERSPEX | | Acrylic (Medium-high impact) | | 1 | | | | | | | | | |
| | 47 | TOTEM-EMPTY-FRAME-RUBBER-GASKET | | | | 2 | | | | | | | | | |
| | 48 | TOTEM-EMPTY-FRAME-TIGHTER-FRAME | | PVC Rigid | | 1 | | | | | | | | | |
| | 49 | TOTEM-EMPTY-FRAME-WHITE-DIFFUSSER | | Acrylic (Medium-high impact) | | 1 | | | | | | | | | |
| F | 50 | TOTEM-FOUNDATION-BOLTS | | | | 1 | | | | | | | | | |
| | 51 | TOTEM-FUNDATION-NUT | | | | 2 | | | | | | | | | |
| | 52 | TOTEM-FOUNDATION-CENTRAL-PIPE | | | | 1 | | | | | | | | | |
| | 53 | TOTEM-LOWER-VESTMENT | | | | 1 | | | | | | | | | |
| | 54 | TOTEM-VESTMENT-2 | | AL5052 | | 1 | | | | | | | | | |


| | | | | | | | |
|---|-----|---|--------|-------------------------|----------|----------------|-----------|
| PROJECT NAME: HBRT PROJECT : 16/2010 V: 3.1 | | UNLESS OTHERWISE SPECIFIED: DIMENSIONS ARE IN MILLIMETERS SURFACE FINISH: TOLERANCES: LINEAR: ±0.5 mm ANGULAR: ±0.5° | | FINISH: VARIES | | | |
| CHANGES | | | | CREATION | NAME | SIGNATURE | DATE |
| DESCRIPTION | REV | DATE | DESIGN | APPRO. | DESIGNED | DANY LIPSKER | 27-Jan-11 |
| | | | | | CHECKED | DOTAN ESHET | 27-Jan-11 |
| | | | | | APPROVED | ADI ALPHANDARY | 27-Jan-11 |
| | | | | | MANUFACT | I M SEGEV | |
| | | | | | Q.A | ENG. ALEX... | |
| | | | | MATERIAL: VARIES | | | |

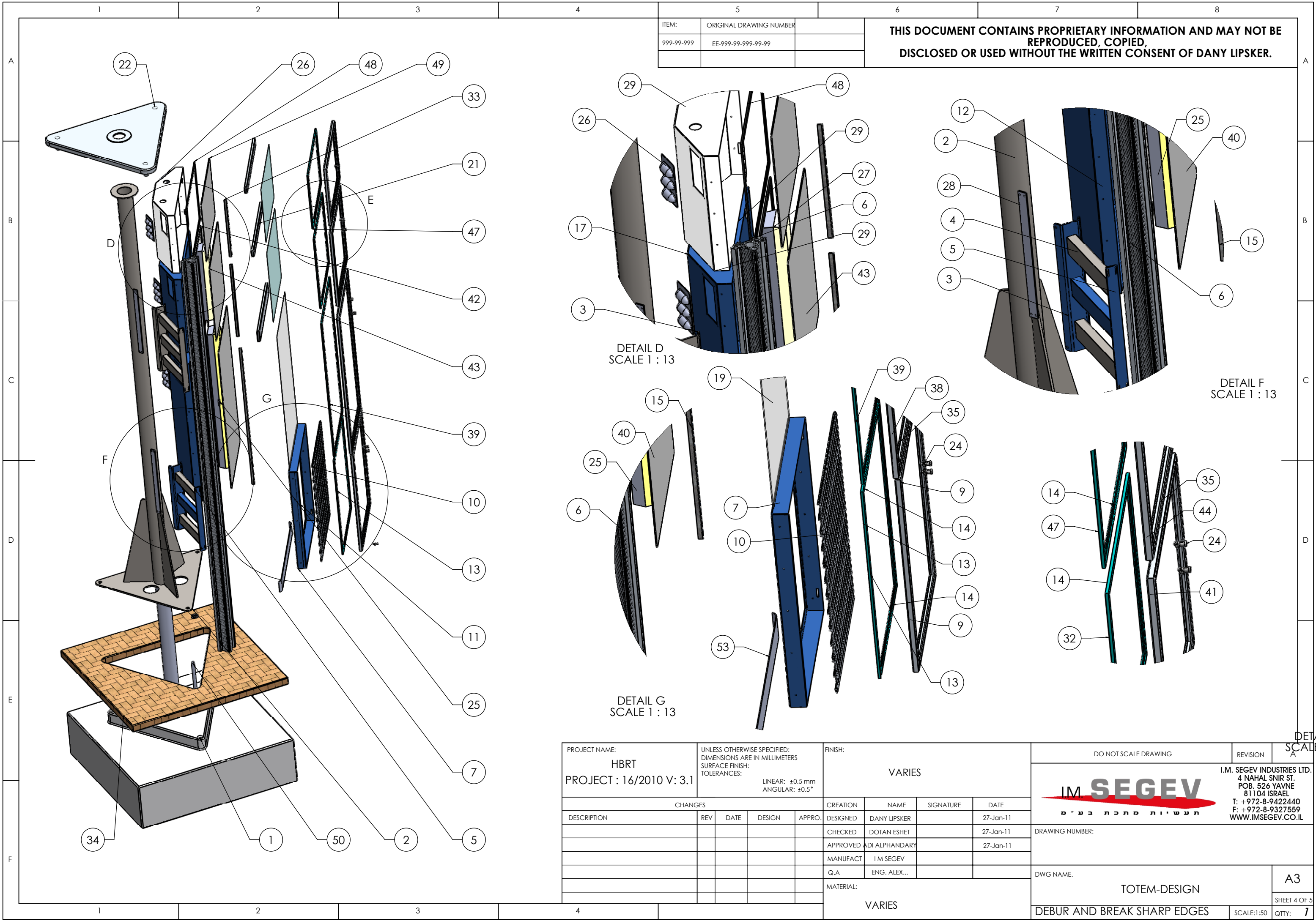
| | | | |
|---|--|---|-------|
| DO NOT SCALE DRAWING | | REVISION | A |
|  | | I.M. SEGEV INDUSTRIES LTD. 4 NAHAL SNIR ST. POB. 526 YAVNE 81104 ISRAEL T: +972-8-9422440 F: +972-8-9327559 WWW.IMSEGEV.CO.IL | |
| DRAWING NUMBER: | | | |
| DWG NAME: | | A3 | |
| TOTEM-DESIGN | | SHEET 2 OF 5 | |
| DEBUR AND BREAK SHARP EDGES | | SCALE:1:50 | QTTY: |



| | |
|------------|-------------------------|
| ITEM: | ORIGINAL DRAWING NUMBER |
| 999-99-999 | EE-999-99-999-99-99 |

THIS DOCUMENT CONTAINS PROPRIETARY INFORMATION AND MAY NOT BE REPRODUCED, COPIED, DISCLOSED OR USED WITHOUT THE WRITTEN CONSENT OF DANY LIPSKER.

| | | | | | | | | | | | | |
|---|-----|---|--------|--------|-----------------------|----------------|-----------|----------------------|---|----------|------------|---------|
| PROJECT NAME: HBRT PROJECT : 16/2010 V: 3.1 | | UNLESS OTHERWISE SPECIFIED: DIMENSIONS ARE IN MILLIMETERS SURFACE FINISH: TOLERANCES: LINEAR: ±0.5 mm ANGULAR: ±0.5° | | | FINISH: VARIES | | | DO NOT SCALE DRAWING | | REVISION | A | |
| CHANGES | | | | | CREATION | NAME | SIGNATURE | DATE | <div></div> <div>I.M. SEGEV INDUSTRIES LTD. 4 NAHAL SNIR ST. POB. 526 YAVNE 81104 ISRAEL T: +972-8-9422440 F: +972-8-9327559 WWW.IMSEGEV.CO.IL</div> | | | |
| DESCRIPTION | REV | DATE | DESIGN | APPRO. | DESIGNED | DANY LIPSKER | | 27-Jan-11 | | | | |
| | | | | | CHECKED | DOTAN ESHET | | 27-Jan-11 | | | | |
| | | | | | APPROVED | ADI ALPHANDARY | | 27-Jan-11 | | | | |
| | | | | | MANUFACT | I M SEGEV | | | DRAWING NUMBER: | | | |
| | | | | | Q.A | ENG. ALEX... | | | | | | |
| | | | | | MATERIAL: | | | | DWG NAME. | | A3 | |
| | | | | | VARIES | | | | | | | |
| 4 | | | | | | | | | DEBUR AND BREAK SHARP EDGES | | SCALE:1:50 | QTTY: 7 |



| | |
|------------|-------------------------|
| ITEM: | ORIGINAL DRAWING NUMBER |
| 999-99-999 | EE-999-99-999-99-99 |
| | |


THIS DOCUMENT CONTAINS PROPRIETARY INFORMATION AND MAY NOT BE REPRODUCED, COPIED, DISCLOSED OR USED WITHOUT THE WRITTEN CONSENT OF DANY LIPSKER.

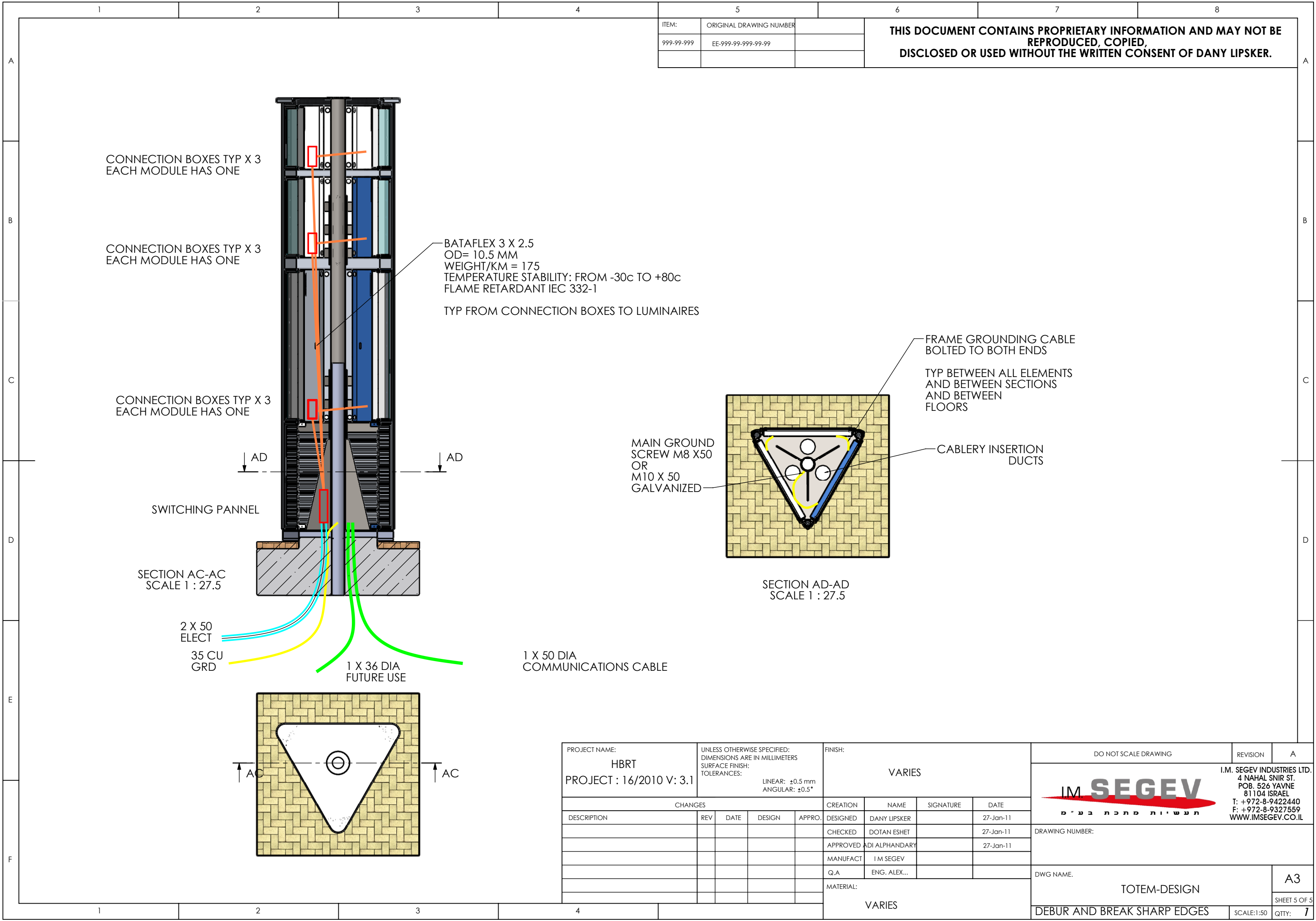
DETAIL D
SCALE 1 : 13

DETAIL F
SCALE 1 : 13

DETAIL G
SCALE 1 : 13

DETAIL A
SCALE 1

| | | | | | | | | | | | | | |
|---|--|---|------|--------|-----------------------|-------------------------|----------------|------|---|-----------------------------|---|--------------|---------|
| PROJECT NAME: HBRT PROJECT : 16/2010 V: 3.1 | | UNLESS OTHERWISE SPECIFIED: DIMENSIONS ARE IN MILLIMETERS SURFACE FINISH: TOLERANCES: LINEAR: ±0.5 mm ANGULAR: ±0.5° | | | FINISH: VARIES | | | | DO NOT SCALE DRAWING | | REVISION | SCALE: 1:50 | |
| | | | | | | | | |  | | I.M. SEGEV INDUSTRIES LTD. 4 NAHAL SNIR ST. POB. 526 YAVNE 81104 ISRAEL T: +972-8-9422440 F: +972-8-9327559 WWW.IMSEGEV.CO.IL | | |
| CHANGES | | | | | CREATION | NAME | SIGNATURE | DATE | | | DRAWING NUMBER: | | |
| DESCRIPTION | | REV | DATE | DESIGN | APPRO. | DESIGNED | DANY LIPSKER | | 27-Jan-11 | | | | |
| | | | | | | CHECKED | DOTAN ESHET | | 27-Jan-11 | | | | |
| | | | | | | APPROVED | ADI ALPHANDARY | | 27-Jan-11 | | | | |
| | | | | | | MANUFACT | I M SEGEV | | | | | | |
| | | | | | | Q.A | ENG. ALEX... | | | | | | |
| | | | | | | MATERIAL: VARIES | | | | DWG NAME. | | A3 | |
| | | | | | | | | | | TOTEM-DESIGN | | SHEET 4 OF 5 | |
| 4 | | | | | | | | | | DEBUR AND BREAK SHARP EDGES | | SCALE:1:50 | QTTY: 7 |



| | |
|------------|-------------------------|
| ITEM: | ORIGINAL DRAWING NUMBER |
| 999-99-999 | EE-999-99-999-99-99 |
| | |

THIS DOCUMENT CONTAINS PROPRIETARY INFORMATION AND MAY NOT BE REPRODUCED, COPIED, DISCLOSED OR USED WITHOUT THE WRITTEN CONSENT OF DANY LIPSKER.

| | | | | | | | | | | | | | | | |
|---|-----|---|--------|--------|-------------------------|----------------|-----------|-----------|---|--|----------|---|--|------------|---------|
| PROJECT NAME: HBRT PROJECT : 16/2010 V: 3.1 | | UNLESS OTHERWISE SPECIFIED: DIMENSIONS ARE IN MILLIMETERS SURFACE FINISH: TOLERANCES: LINEAR: ±0.5 mm ANGULAR: ±0.5° | | | FINISH: VARIES | | | | DO NOT SCALE DRAWING | | REVISION | A | | | |
| | | | | | | | | | <div><div>IM SEGEV</div><div>תעשיות סג'יב בע"מ</div></div> <div>I.M. SEGEV INDUSTRIES LTD. 4 NAHAL SNIR ST. POB. 526 YAVNE 81104 ISRAEL T: +972-8-9422440 F: +972-8-9327559 WWW.IMSEGEV.CO.IL</div> | | | | | | |
| CHANGES | | | | | CREATION | NAME | SIGNATURE | DATE | DRAWING NUMBER: | | | | | | |
| DESCRIPTION | REV | DATE | DESIGN | APPRO. | DESIGNED | DANY LIPSKER | | 27-Jan-11 | | | | | | | |
| | | | | | CHECKED | DOTAN ESHET | | 27-Jan-11 | | | | | | | |
| | | | | | APPROVED | ADI ALPHANDARY | | 27-Jan-11 | | | | | | | |
| | | | | | MANUFACT | I M SEGEV | | | | | | | | | |
| | | | | | Q.A | ENG. ALEX... | | | | | | | | | |
| | | | | | MATERIAL: VARIES | | | | DWG NAME. TOTEM-DESIGN | | | | | A3 | |
| | | | | | | | | | | | | | | | |
| 4 | | | | | | | | | DEBUR AND BREAK SHARP EDGES | | | | | SCALE:1:50 | QTTY: 7 |